



MEGHALAYA STATE AQUACULTURE MISSION

JINMANI POKKRI KO CHO'NA DORKASTO GALANI

1. Bimung aro address, dorkasto galgipani kam aro dolni bimung

i) Phone No. :

ii) Fax :

iii) E-mail ID :

2. Badia dol: Self -Help-Grouprang / Co-operative Societyrang/ Communityrang

3. Dolni Mande gimik:

4. Na'jilanio maiaba changa sapani :

5. Cho'nasigipa biap:

i) District :

ii) C & RD Block :

iii) Song :

iv) Thana :

v) Maiba ui'dapatani :

6. Jilani a'bako talatani:

i) Dolni jakalenggipa a'bani dal'ani (Ha):

ii) Na'jilnasigipa pokkrini chini apalani (Ha):

7. Na'jilnasigipa biapo goprete,bisi on'e ba gipin dake na'rimanirangkojakalama?

8. Chini bidik : (Chibasal/Tipaigipa)

9. Dolo (Office) kam ka'giparangni bimumung aro kamni bimumung.

10. Bankoniko ra'sroani chu'gimik kata/bangki chotgni dongode

Bilsi	Bank	Srogipa tangka	Chotgnigipa	Basako matchotgen?

Tarik:

Dorkasdar ni soi aro mohor

On'chapna nanggipa lekbarang:

1. Dorkasdarni sakkini lekka.
2. A'ani nokgipa ong'ani sakki.
3. Dolni bading-chiwalna segatani lekka.
4. Biapni dulni noksa (layout).
5. Pokkriona chiko ra'bana nangode,on'ani lekka.
6. Champenggijani see on'ani - Nokma/Sirdarba Songrodilgipani.
7. Skim ni niam gita, rika-cho'ani 40% kode jakchi bilchi ba ka'e dakgen ine see on'ani.



MEGHALAYA STATE AQUACULTURE MISSION

JINMANI POKKRIKO TARIANI

Meghalaya State Aquaculture Mission (MSAM) 2012-13 ni ning'o kam ka'ani Mini Mission-I

Skim ni niam:

- Batgipa 2 hectare oni dakchakani ko man'a kragipa biapara komioba 0.5 hectare jean tu'a 1.5 meters oni 2 meters ong'na nanga. Jinma dal'bata pokkriko tarina sikode, 2 hectare na batgipa a'ako de chu'gimik jinma an dakna nanggen.
- Skimni ning'o tangka paisa dakchakaniara:

Dal'a (Ha)		Projectni dam	Dakchakani 60% Rs.	Jinmanion'paani 40% Rs.
i.	0.5 ha	2,50,288/-	1,50,173/-	1,00,115/-
ii.	1.0 ha	4,92,916/-	2,95,750/-	1,97,166/-
iii.	1.5 ha	7,35,874/-	4,41,524/-	2,94,350/-
iv.	2.0 ha	9,78,832/-	5,87,299/-	3,91,533/-

- Jinmani pokkriko bilisio na'tok man'na nanganiara @ 2000 Kg/Ha ong'a, uan na'bisa watani bilisisa ja'man ong'gen.
- Ia ko dakna galgiparang pokkriko cho'ani kamni korosoni 40% ko an'tangtang dakgen ine ku'rachake seani on'na nanggen.
- Dingtang dingtang dol/pokkrini dal'anikri kam ka'chengani aro ja'mano nangdapani korosko ka'mao Table 1-4 o mesokaha

**DINGTANG DINGTANG DOLNI JINMANI POKKRI DAL'A 0.5 HA ONI 2.00
HA ONG'GIPANI CHO'ANI ARO ONG'TAITAIGNIGIPA KOROSRANG**

DAL'A-0.5 HA

TABLE-1

S. No.	Sulsul mesokani	Tale seani	Dam()
	Cho'ani koros		
	Pokkrini apala	5000 sq.m.	----
	Pokkrini tu'a	1.5 m.	----
	Pokkri dotgimik	7500 m ³	----
	A.C siltong	2 Nos.	----
A	Chu'gimik tangka koros ong'a (Govt. of India ni niam)		2,00,000
	Bilsio koros ong'taitaiani		
	Chun 500 kg @ ₹ 12/- kg prako	500 x 12	6,000
	Matchuki 5000 kg @ ₹ 1/- per kg	5000 x 1	5,000
	Ammonium Super phosphate 100 kg @ ₹ 8/- kg prak o	100 x 8	800
	Urea 100 kg @ ₹ 8/- kg prak o	100 x 8	800
	IMC and a^gipinoni jaksi-na^bisa mangprako@ ₹ 2/-	5000 nos.	10,000
	Ginde 250 kg @ ₹ 15/- kg prako	250 x 15	3,750
	To biki 250 kg @ ₹ 20/-kg prako	250 x 20	5,000
	Sam on'e sabisiko champengani	L/S	4,000
	Na'jilanio jakkalani bostu	L/S	10,330
	Sal 36 ni hajira @ ₹ 128/- salprako	36 x 128	4,608
B	Chu'gimik bilsio o ong'taitagipa koros		50,288
C	Chu'gimik tangka aro ong'taitaigipa koros (A+B)		2,50, 288
	Skimna tangka on'e dakchakani		
D	Sorkarini dakchakani @ 60 %	2,50,288 x 0.6	1,50,173
E	Jinmani on'paani @ 40 %	2,50,288 x 0.4	1,00,115
	Chu'gimik (D+E)		2,50,288

DAL'A-1.0 HA

TABLE-2

S. No.	Sulsul mesokani	Tale seani	Dam()
	Cho'ani koros		
	Pokkrini apala	10000 sq.m.	-
	Pokkrini tu'a	1.5 m.	-
	Pokkri dotgimik	15000m ³	-
	A.C siltong	Ge 4	-
A	Chu'gimik tangka koros ong'a (Govt. of India ni niam)		4,00,000
	Bilsio koros ong'taitaiani		
	Chun 1000 kg @ ₹ 12/- kg prako	1000x12	12,000
	Matchuki 10000 kg @ ₹ 1/- per kg	10000x1	10,000
	Ammonium Super phosphate 200 kg @ ₹ 8/- kg prak o	200 x 8	1600
	Urea 200 kg @ ₹ 8/- kg prak o	200 x 8	1600
	IMC and a^gipinoni jaksi-na^bisa mangprako @ ₹ 2/-	Mang 10000	20,000
	Ginde 500 kg @ ₹ 15/- kg prako	500 x 15	7,500
	To biki 500 kg @ ₹ 20/-kg prako	500 x 20	10,000
	Sam on'e sabisiko champengani	L/S	6,000
	Na'jilanio jakkalani bostu	L/S	15,000
	Sal 72 ni hajira @ ₹ 128/- salprako	72 x 128	9,216
B	Chu'gimik bilsio o ong'taitagipa koros		92,916
C	Chu'gimik tangka aro ong'taitaigipa koros (A+B)		4,92,916
	Skimna tangka on'e dakchakani		
D	Sorkarini dakchakani @ 60 %	4,92,916x 0.6	2,95,750
E	Jinmani on'paani @ 40 %	4,92,916x 0.4	1,97,166
	Chu'gimik (D+E)		4,92,916

DAL'A-1.5 HA

TABLE-3

S. No.	Sulsul mesokani	Tale seani	Dam()
	Cho'ani koros		
	Pokkrini apala	15000 sq.m.	-
	Pokkrini tu'a	1.5 m.	-
	Pokkri dotgimik	22500 m ³	-
	A.C siltong	Ge 6	-
A	Chu'gimik tangka koros ong'a (Govt. of India ni niam)		6,00,000
	Bilsio koros ong'taitaiani		
	Chun 1500 kg @ ₹ 12/- kg prako	1500x12	18,000
	Matchuki 15000 kg @ ₹ 1/- per kg	15000x1	15,000
	Ammonium Super phosphate 300 kg @ ₹ 8/- kg prak o	300 x 8	2400
	Urea 300 kg @ ₹ 8/- kg prak o	300 x 8	2400
	IMC and a^gipinoni jaksi-na^bisa mangprako @ ₹ 2/-	Mang 15000.	30,000
	Ginde 750 kg @ ₹ 15/- kg prako	750 x 15	11,250
	To biki 750 kg @ ₹ 20/-kg prako	750 x 20	15,000
	Sam on'e sabisiko champengani	L/S	8,000
	Na'jilanio jakkalani bostu	L/S	20,000
	Sal 108 ni hajira @ ₹ 128/- salprako	108x128	13,824
B	Chu'gimik bilsio o ong'taitagipa koros		1,35,874
C	Chu'gimik tangka aro ong'taitaigipa koros (A+B)		7,35,874
	Skimna tangka on'e dakchakani		
D	Sorkarini dakchakani @ 60 %	7,35,874 x 0.6	4,41,524
E	Jinmani on'paani @ 40 %	7,35,874 x 0.4	2,94,350
	Chu'gimik (D+E)		7,35,874

DAL'A-2.0 HA

TABLE-4

S. No.	Sulsul mesokani	Tale seani	Dam()
	Cho'ani koros		
	Pokkrini apala	20000 sq.m.	-
	Pokkrini tu'a	1.5 m.	-
	Pokkri dotgimik	30000 m ³	-
	A.C siltong	Ge 8	-
A	Chu'gimik tangka koros ong'a (Govt. of India ni niam)		8,00,000
	Bilsio koros ong'taitaiani		
	Chun 2000 kg @ ₹ 12/- kg prako	2000 x 12	24,000
	Matchuki 20000 kg @ ₹ 1/- per kg	20000 x 1	20,000
	Ammonium Super phosphate 400 kg @ ₹ 8/- kg prak o	400 x 8	3200
	Urea 400 kg @ ₹ 8/- kg prak o	400 x 8	3200
	IMC and a^gipinoni jaksi-na^bisa mangprako @ ₹ 2/-	Mang 20000	40,000
	Ginde 1000 kg @ ₹ 15/- kg prako	1000 x 15	15,000
	To biki 1000 kg @ ₹ 20/-kg prako	1000 x 20	20,000
	Sam on'e sabisiko champengani	L/S	10,000
	Na'jilanio jakkalani bostu	L/S	25,000
	Sal 144 ni hajira @ ₹ 128/- salprako	144 x 128	18,432
B	Chu'gimik bilsio o ong'taitagipa koros		1,78,832
C	Chu'gimik tangka aro ong'taitaigipa koros (A+B)		9,78,832
	Skimna tangka on'e dakchakani		
D	Sorkarini dakchakani @ 60 %	9,78,832 x 0.6	5,87,299
E	Jinmani on'paani @ 40 %	9,78,832 x 0.4	3,91,533
	Chu'gimik (D+E)		9,78,832

Kam ka'ani bewal:

1. Stateni dakna man'a kragiparang aro Community/Self Help Group/Fish Farmer Co-operative Society/Multi Purpose Co-operative Societyrang skim ko jinma na ui'atnagita local t.v, radio, songbado chapa ka'e aro electronic bewalo bang'en dakgen. Fish Farmers Co-operative Society/ Multi Purpose Cooperative Societyrang dorkasto ko an'tangtangni Districtrangni Assistant Registrar of Co-operative Societyrang gita on'na gita nanga.
2. District Executive Officer/Superintendent of Fisheriesrang dorkasto galgiparangko name nigen,dorkasto galgipa a'ani nokgiparangko lekkarangko jeon galgipa manderangni 40% on'chengna ama unbaksa gipin dakna nanggipa kamko ba sandie nianiko dakgen.
3. A'bachengo biapko nichenganiko Fish Farmer's Development Agencyni Technical Staff/Program Managerrang dakgen uandaken uamang niani kam ko dakna biap nama ba namgijaniko uamangni District Executive Officerrangna talate on'gen.
4. Uni ja'mano DEOrang namgniko man'na kragiparangni bimungrangko (beneficiaries) ko District Aquaculture Mission Committee ona ra'anggen. Ia Committeeni dilgipaba Chairman districtrangni Deputy Commissioner an ong'a.
5. District Aquaculture Mission Committee (DAMC) ni Chairman ni ra'chakaniko man'ani ja'mano Member Secretary Committee ko tom'atgen.
6. Uandaken District Aquaculture Mission Committee name niani ko dake, basee ra'chakgimin dorkastrangko sulsul seako tarie Chief Executive Officer, Fish Farmer's Development Agencyna bon'kamgipa ra'chakaniko watatgen.
7. Dakchakaniko man'na kratatgipa dolrangni bimungrangko ra'chakani ja'mano see District Executive Officerrangna aro, Chairman District Aquaculture Mission Committeena on'chape watatgen.
8. DEO kam ka'ani hukumko seokgimin dolrangna bakan on'atgen.Technical bewalo pokkriko cho'ani, natokrangko jilna skang aro ja'man simsakani, na'tokrangni sabisiko champenganirangko skie on'gipa dilgiparang biap on skie on'aniko dakgen.
9. A'bachengon je dolrang dakchakaniko man'gen, uamang kamko a'bachengani somoio an'tangtang 40% ko on'chengna nanggen.
10. Dakchakaniko man'giparang (beneficiaries) an'tangtangni koroschi (40%) kam ka'aniko District Executive Officer/ Executive Officer/ Programme Managerrang tiktak ong'aia ine sandiani ja'mano, District

Executive Officer /Superintendent of Fisheriesrang skanggipa 50% tangka dakchakaniko (subsidyko) uamangni kam ka'chengo nanggipa korosna on'gen.

11. District Executive Officer/Executive Officer/Programme Managerrangni skanggipa bak dakchakani 50% ko on'aniko skimni kamna name dake jakkalaniko sandie on'ani ja'man, bangki kam ka'ani koros nananggipa 50% ko District Executive Officer/Superintendent of Fisheriesrang kam ka'gipa/namgniko mangipa dolrangna on'dape skimko matchotatna man'gen.

12. Gittamgipa changna on'gipa bak jekon kam ka'chengo jakkalna nanggiparang ong'a uko na'tok jilani pokkriko cho'a matchoto on'gen jekon bakgni daka a) na'bisa, na'tokni cha'ani, na'tokrangni sabisiko chel'chakna dakchakaniko Department an kam ka'gen, aro b) matchu ki'i, chun, superphosphate, urea somoigita na'tok rim'e niani kamna korosrangko organisation, dakchakaniko man'giparang uarangko breani bill, voucherrangko mesokkon uamangna tangka ko on'gen.

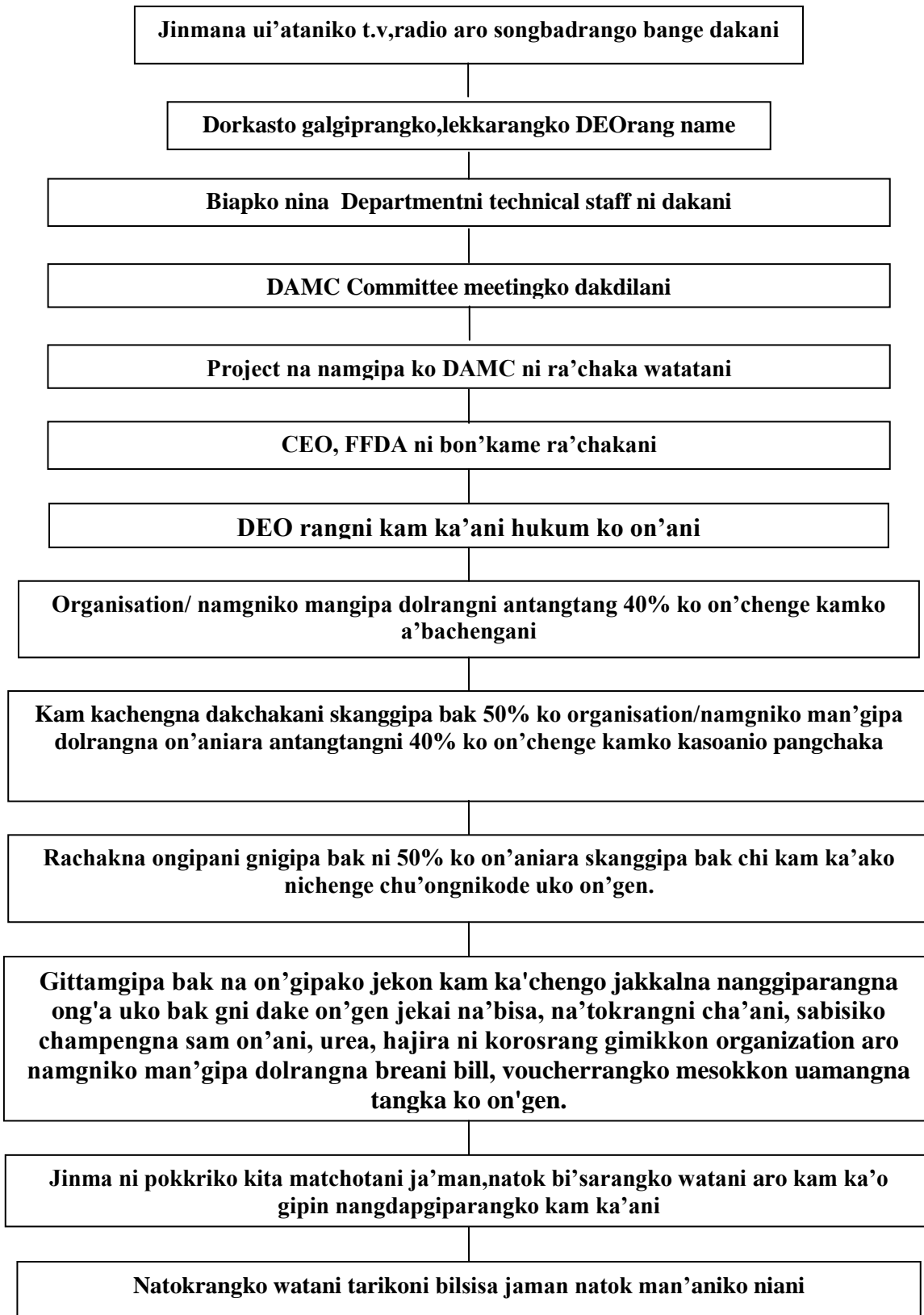
13. Dakchakani tangkako on'na skang namgniko man'gipa dolrang an'tantangni pokkriko na'tok rim'ani somoi tarikrangko ui'ate see on'aniko dakgen, aro Departmentnaba ui'atgen.

14. Projectko a'bachengaoni matchotaona kingking jarikkitni reportko District Executive Officerrang Chief Executive Officer, Fish Farmer's Development Agency Shillongona on'na nanga.

15. Na'tok man'ani tik ong'gipa statistical data jeon rim'ani ta'rikko janapa, badita rim'aha, na'tokrangni rokom, dal'roroani, palasimanirangko jinmani pokkriko photo ka'e, videorang baksa gimik Superintendent of Fisheries-cum-District Executive Officerrang rakina nanga.

Director of Fisheries-cum- Chief
Executive Officer, FFDA
Meghalaya, Shillong

JINMANI POKKRI KO CHO'ANI BIDINGO KAM KA'ANIKO ADITA TALATANI



Director of Fisheries-cum-
Chief Executive Officer, FFDA
Meghalaya, Shillong