



MEGHALAYA STATE AQUACULTURE MISSION

Ka Form na ka bynta ban pyniar/ai Jingiarap ia ka kam ri dohkha lyngba ki pung shnong

1. Kyrteing, Jaka sah bapura, ki kyrdan ba bat u nong aplai hapoh ka kynhun (Organization)

 - i) Nombar Phone:
 - ii) Fax :
 - iii) E-mail ID :
2. Ki thup: Self-Help-Groups / Co-operative Societies / Shnong etc.
3. Jingdon ki briew hapoh ka kynhun:
4. Ka jingdon jingtip (Experience) jong ka kynhun ha kaba iadei bad ka kam ri dohkha :
5. Ki phang jong ka jaka ban pyntrei ia ka projek:
 - i) District :
 - ii) C & RD Block :
 - iii) Ki Shnong :
 - iv) Police Station :
 - v) Kiwei pat ki thup jingtip :
6. Jingtip ba pura shaphang ka Farm:
 - i) Jingheh jong ka jaka (Hectare) hapoh ka jingpyniaiad ka kynhun:
 - ii) Jingdon jong ka jaka (Hectare) ba lah ban shna ia ka pung:
7. Hato ka jaka ka lah ban don ka jingpynjulor pathar ia ki dohkha kum kaba ber bih, jingpynbthei bomb, lane da kiwei kiwei pat ki lad?
8. Ka tyllong um: _____ (Neh lynter/por lyiur)

9. Kyr teng bad ka kyr dan jong ki nong batkam jong ka kynhun.

10. Jingtíp bniah jong ki ram na ki bank (Bank Loan) ba la juh ioh/ba dang sah

Snem	Bank	Ram ba la ioh	Ba dang sah	Lano yn siew dep ia ka ram?

Jingsoi kyr teng u nong aplai bad ka Seal

Ki kot ki sla ba donkam ban phah lang bad ka form:

1. Ka kot pynshisha ia u nong aplai (Identity proof).
2. Ki dular jaka ban pynshisha ia ka jinglong trai.
3. Ki kot ba la registrar na ka bynta ka khaii pateng jong ka kynhun, lada don.
4. Ka jingwan dur jong ka jaka (layout/plan).
5. Ka jingioh jingbit na ki bor shnong ban ring um lada ka pung ka donkam ban ring um na shabar.
6. Ka No Objection Certificate na ki bor ba halor / Rangbah Shnong bad kiwei kiwei.
7. Ka jingthoh ba ki lah ban noh synniang 40% na ka jinglut baroh ka ba lah ban long da ka jingtrei shnong ka ban ia ryngkat bad ka bhah ba la buh bad ban pynbiang ruh ia kiwei kiwei ki jingdonkam ki ba lah ban mih ha kaba pyntrei ia ka kam kat kum ki kyndon jong ka Skim.



MEGHALAYA STATE AQUACULTURE MISSION

Jingpyniar ia ki kam ri dohkha lyngba ka jingtei iaki pung shnong Ban pyntrai kam lyngba ka Meghalaya State Aquaculture Mission (MSAM) jong ka Snem 2011-12

Ki kyndon jong ka Skim

- Ka jingheh jong ka jaka ban shna pung ka ban ai jingiarap ka dei ban ym duna ia ka 0.5 Hectare bad haduh 2.0 hectare bad ka jingjylliew ka dei ban long 1.5 meters haduh 2.0 meters. Lada ki shnong / kynhun bad kiwei kiwei ki kwah ban shna ka pung kaba kham heh ia ka 2.0 hectare , ia ki jinglut ha ka ba iadei bad ka jaka kaba tam dei ban bei hi da ka shnong / Kynhun.
- Ka jingiarap ban bei pisa lyngba ka Skim ka long kumne harum

Jingheh (Ha)	Jinglut baroh Rs.	Subsidy 60% Rs.	Noh Synniang da ka Shnong/kynhun 40% Rs.
i. 0.5 ha	2,50,288/-	1,50,173/-	1,00,115/-
ii. 1.0 ha	4,92,916/-	2,95,750/-	1,97,166/-
iii. 1.5 ha	7,35,874/-	4,41,524/-	2,94,350/-
iv. 2.0 ha	9,78,832/-	5,87,299/-	3,91,533/-

- Ka thong ha ka ban pynmih dohkha na ki pung Shnong / Kynhun bad kiwei kiwei kan long kumba 2000 Kg/Hectares shi snem shi snem, ia kaban shim jingkhein shisnem hadien ba la buh ia ki symbai dohkha.
- Ki nong aplai ki dei ruh ban pynthikna ryngkat ka jingthoh ba ki lah ban noh synniang 40% na ka jinglut baroh ka ba lah ban long da ka jingtrei shnong ka ban ia ryngkat bad ka bhah bala buh bad ban pynbiang ruh ia kiwei kiwei ki jingdonkam ki ba lah ban mih ha kaba pyntrai ia ka kam.
- Ka jinglut jingsep na ka bynta ki pung dohkha kat kum ki jingheh la kdew ha ka table 1 – 4 harum.

Jingheh 0.5 hectare

Table - 1

KI JINGLUT HA KABA SDANG BAD KI JINGLUT KIBAN WAN MAN LA KA POR HA KI BYNTA BAPHER BAPHER KATKUM KA JINGHEH KA PUNG NADUH 0.5 HA HADUH 2.00 HA

Nombar	Jingdonkam	Jingthew	Dor (₹)
	Ki jingpynlut naba sdang		
	Jingheh jong ka pung (m ²)	5000	----
	Jingjylliew jong ka pung (m)	1.5	----
	Jingngiam um jong ka pung (m ³)	7500	----
	Ki pipe A.C (tylli)	2	----
A	Ki jingpynlut baroh naba sdang (katkum ka ain sorkar kmie)		2,00,000
	Ki jingpynlut ba manla ka por ha ka shi snem		
	Shun 500 kilo haka dor ₹ 12/- shi kilo	500 x 12	6,000
	Eit masi 5000 kilo haka dor ₹ 1/- shi kilo	5000 x 1	5,000
	Ammonium Super phosphate 100 kilo haka dor ₹ 8/- shi kilo	100 x 8	800
	Urea 100 kilo haka dor ₹ 8/- shi kilo	100 x 8	800
	Ki symbai dohkha IMC bad Exotic Carp haka dor ₹ 2/- iwei	5000 tylli.	10,000
	Skop kba 250 kilo haka dor (₹) 15/- shi kilo	250 x 15	3,750
	Kheri 250 kilo haka dor (₹) 20/- shi kilo	250 x 20	5,000
	Jingai jingiada na ki jingpang	Kyllum	4,000
	Kiwei kiwei ki tiar ba donkam	Kyllum	10,330
	Bai trei 36 ngut briew-shi sngi ha ka dor 128/ - u wei briew ha ka shisngi	36 x 128	4,608
B	Ki jingpynlut ha ka shi snem		50,000
C	Ki jingpynlut naba sdang bad baroh ha ka shi snem (A+B)		2,50,288
	Ka skim bei tyngka		
D	Jingiarap na ka sorkar kumba 60 %	2,50,288 x 0.6	1,50,173
E	Ka jingsynniang na u paidbah kumba 40 %	2,50,288 x 0.4	1,00,115
	Jing khein kyllum (D+E)		2,50,288

Jingheh 1.00 Hectare

Table - 2

Nombar	Jingdonkam	Jingthew	Dor (₹)
	Ki jingpynlut naba sdang		
	Jingheh jong ka pung (m ²)	10000	----
	Jingjylliew jong ka pung (m)	1.5	----
	Jingngiam um jong ka pung (m ³)	15000	----
	Ki pipe A.C (tylli)	4	----
A	Ki jingpynlut baroh naba sdang (katkum ka ain sorkar kmie)		4,00,000
	Ki jingpynlut manla ka por ha ka shi snem		
	Shun 1000 kilo haka dor ₹ 12/- shi kilo	1000 x 12	12,000
	Eit masi 10000 kilo haka dor ₹ 1/- shi kilo	10000 x 1	10,000
	Ammonium Super phosphate 200 kilo haka dor ₹ 8/- shi kilo	200 x 8	1600
	Urea 200 kilo haka dor ₹ 8/- shi kilo	200 x 8	1600
	Ki symbai dohkha IMC bad Exotic Carp haka dor ₹ 2/- iwei	10000 tylli.	20,000
	Skop kba 500 kilo haka dor (₹) 15/- shi kilo	500 x 15	7500
	Kheri 500 kilo haka dor (₹) 20/- shi kilo	500 x 20	10,000
	Jingai jingiada na ki jingpang	Kyllum	6,000
	Kiwei kiwei ki tiar ba donkam	Kyllum	15,000
	Bai trei 72 ngut briew-shi sngi ha ka dor 128/ - u wei briew ha ka shisngi	72 x 128	9,216
B	Ki jingpynlut ha ka shi snem		92,916
C	Ki jingpynlut naba sdang bad baroh ha ka shi snem (A+B)		4,92,916
	Ka skim bei tyngka		
D	Jingiarap na ka sorkar kumba 60 %	4,92,916 x 0.6	2,95,750
E	Ka jingsynniang na u paidbah kumba 40 %	4,92,916 x 0.4	1,97,166
	Jing khein kyllum (D+E)		4,92,916

Jingheh 1.5 Hectare

Table - 3

Nombar	Jingdonkam	Jingthew	Dor (₹)
	Ki jingpynlut naba sdang		
	Jingheh jong ka pung (m ²)	15000	----
	Jingjylliew jong ka pung (m)	1.5	----
	Jingngiam um jong ka pung (m ³)	22500	----
	Ki pipe A.C (tylli)	6	----
A	Ki jingpynlut baroh naba sdang (katkum ka ain sorkar kmie)		6,00,000
	Ki jingpynlut manla ka por ha ka shi snem		
	Shun 1500 kilo haka dor ₹ 12/- shi kilo	1500 x 12	18,000
	Eit masi 15000 kilo haka dor ₹ 1/- shi kilo	15000 x 1	15,000
	Ammonium Super phosphate 300 kilo haka dor ₹ 8/- shi kilo	300 x 8	2400
	Urea 300 kilo haka dor ₹ 8/- shi kilo	300 x 8	2400
	Ki symbai dohkha IMC bad Exotic Carp haka dor ₹ 2/- iwei	15000 tylli.	30,000
	Skop kba 750 kilo haka dor (₹) 15/- shi kilo	750 x 15	11,250
	Kheri 750 kilo haka dor (₹) 20/- shi kilo	750 x 20	15,000
	Jingai jingiada na ki jingpang	Kyllum	8,000
	Kiwei kiwei ki tiar ba donkam	Kyllum	20,000
	Bai trei 108 ngut briew-shi sngi ha ka dor 128/ - u wei briew ha ka shisngi	108 x 128	13,824
B	Ki jingpynlut ha ka shi snem		1,35,874
C	Ki jingpynlut naba sdang bad baroh ha ka shi snem (A+B)		7,35,874
	Ka skim bei tyngka		
D	Jingiarap na ka sorkar kumba 60 %	7,35,874 x 0.6	4,41,524
E	Ka jingsynniang na u paidbah kumba 40 %	7,35,874 x 0.4	2,94,350
	Jing khein kyllum (D+E)		7,35,874

Jingheh 2.00 Hectare

Table - 4

Nombar	Jingdonkam	Jingthew	Dor (₹)
	Ki jingpynlut naba sdang		
	Jingheh jong ka pung (m ²)	20,000	----
	Jingjylliew jong ka pung (m)	1.5	----
	Jingngiam um jong ka pung (m ³)	30000	----
	Ki pipe A.C (tylli)	8	----
A	Ki jingpynlut baroh naba sdang (katkum ka ain sorkar kmie)		8,00,000
	Ki jingpynlut manla ka por ha ka shi snem		
	Shun 2000 kilo haka dor ₹ 12/- shi kilo	2000 x 12	24,000
	Eit masi 20000 kilo haka dor ₹ 1/- shi kilo p	20000 x 1	20,000
	Ammonium Super phosphate 400 kilo haka dor ₹ 8/- shi kilo	400 x 8	3200
	Urea 400 kilo haka dor ₹ 8/- shi kilo	400 x 8	3200
	Ki symbai dohkha IMC bad Exotic Carp haka dor ₹ 2/- iwei	20000 tylli.	40,000
	Skop kba 1000 kilo haka dor (₹) 15/- shi kilo	1000 x 15	15000
	Kheri 1000 kilo haka dor (₹) 20/- shi kilo	1000 x 20	20,000
	Jingai jingiada na ki jingpang	Kyllum	10,000
	Kiwei kiwei ki tiar ba donkam	Kyllum	25,000
	Bai trei 144 ngut briew-shi sngi ha ka dor 128/ - u wei briew ha ka shisngi	144 x 128	18,432
B	Ki jingpynlut ha ka shi snem		1,78,832
C	Ki jingpynlut naba sdang bad baroh ha ka shi snem (A+B)		9,78,832
	Ka skim bei tyngka		
D	Jingiarap na ka sorkar kumba 60 %	9,78,832 x 0.6	5,87,299
E	Ka jingsynniang na u paidbah kumba 40 %	9,78,832 x 0.4	3,91,533
	Jing khein kyllum (D+E)		9,78,832

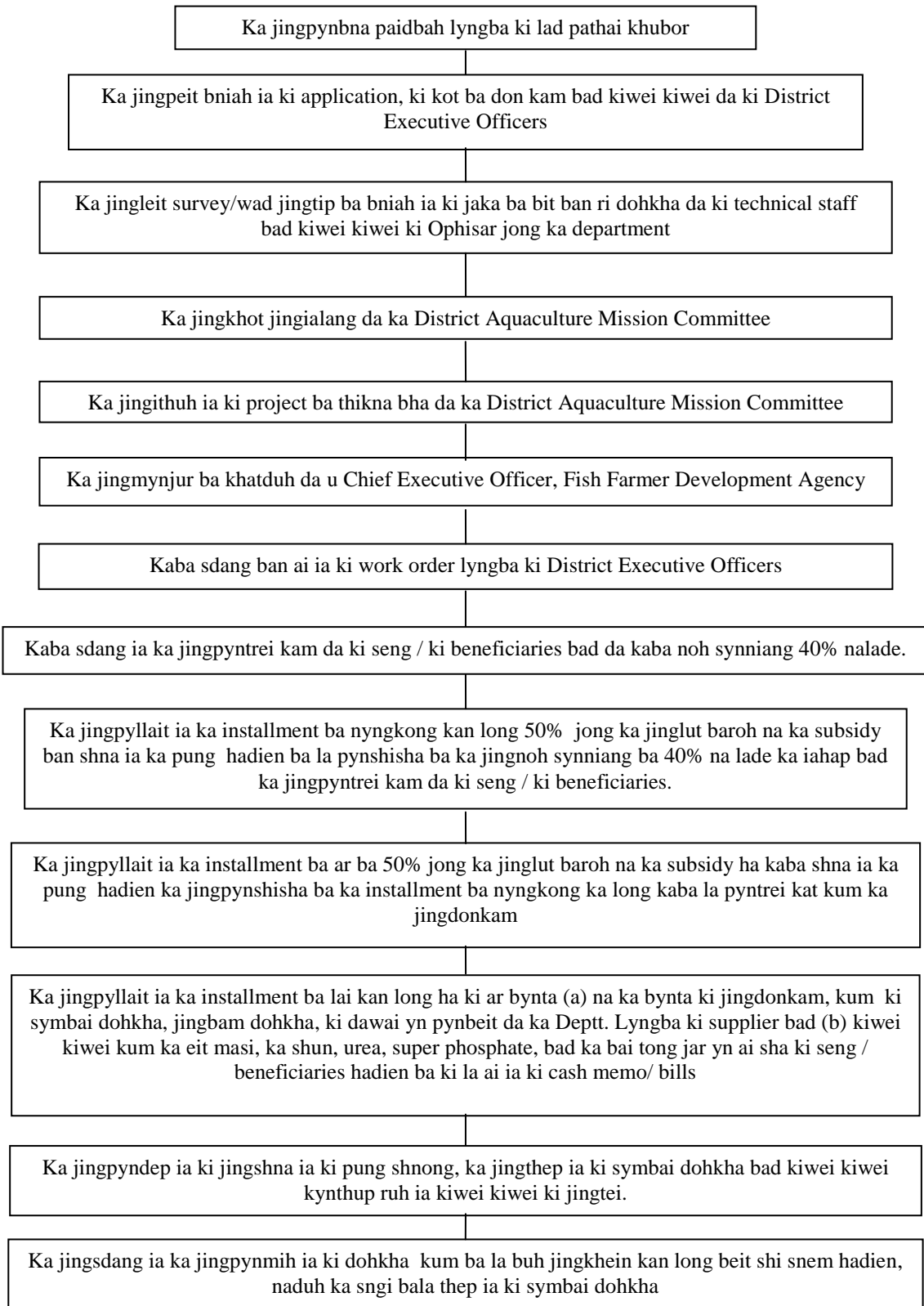
Ka Rukom Pyntreikam:

1. Ia ka skim yn pynbna paidbah lyngba ki lad pathai khubor ha poh ka jylla kum ki kot khubor bad kiwei kiwei ki lad na ka bynta ka jingmyntoi ia baroh ha ka liang ka Shnong ne ki kynhun jong ka jylla ki ba don jingthmu ia kane ka kam. Ki seng kum ki Fish Farmers Co-operative Societies / Multi Purpose Societies ki dei ban phah ia ki aplikeshon lyngba ka Office treikam jong U Assistant Registrar Co-operative Societies ha la ki jong ki District.
2. Ki District Executive Officer/Superintendent of Fisheries jong ki District bapher bapher ki dei ban bishar bniah ia ki aplikeshon, ka jingpynshisha halor ka jinglong trai ki nong aplai, ki kot ki sla bad kiwei kiwei de, kynthup ia ka jinglah ki nong aplai ban noh synniang 40 % na ka jinglut baroh ka ba lah ban long da ka jingtrei shnong ka ban ia ryngkat bad ka bhah ba la buh bad ban pynbiang ia kiwei kiwei ki jingdonkam ki ba lah ban mih ha kaba pyntrei ia ka kam.
3. Hadien ba la ioh ia ki aplikeshon baroh, kan don ka jing leit jurip ia ki jaka da ki Technical Staff / Programme Manager jong ka Ophis Fish Farmer Development Agency katkum ba la buh bad hadien ba la dep jurip kin sa phah ia ki kaiphod halor ka jinglong jong kawei pa kawei ka jaka sha ki Ophisar jong ki District.
4. Ki District Executive Officer kin buh ia ki kyrteng jong ki beneficiaries kiba don ka jaka kaba ibit ban shna pung hakmat ka District Aquaculture Mission Committee ia ka ba yn khlieh duh da u Deputy Commissioner jong man la ki District.
5. U member secretary un sa khot jingialang hadien ba la ioh ia ka jingmynjur na u Chairman jong ka District Aquaculture Mission Committee (DAMC).
6. Ka District Aquaculture Mission Committee kan sa bishar bniah, jied bad pynkhreh ia ka list jong ki nong aplai ba ibit ban shah jied bad phah ruh sha ka ophis trei kam U Chief Executive Officer, Fish Farmer Development Agency na ka bynta ban ioh ka jingmynjur.
7. Ia ki list jong ki beneficiaries ba la ioh jingmynjur, katkum ki jingibit yn sa phah sha ki District Executive Officer jong ki district bad kumjuh ruh sha u Chairman ka District Aquaculture Mission Committee.
8. Ia ka work order yn sa sam da ki District Executive Officer sha ki shnong / kynhun. Ki jinghikai ha ka liang ka jingtih ia ki pung, ki jingpynbit pynbiang ha shwa bad ha dien bala thep ia ki symbai dohkha, ki lad iada ia ki jait jingpang jong ki dohkha bad kiwei kiwei yn sa batai da ki Ophisar ha ki jaka ban pyntrei ia ka kam.
9. Nyngkong eh, ki seng / beneficiaries kin hap ban sdang ia ka kam da ka bhah jong ki ka ba long 40%.

10. Hadien ba la dep pynshisha da ki District Executive Officer /Executive Officer/Programme Manager ba ka jingtrei da kaba noh synniang 40% na lade ka lade, ki District Executive Officer /Superintendent of Fisheries kin sa pyllait ia ka 1st installment ba 50% na ka subsidy (capital cost) sha ki seng / beneficiaries bala jied.
11. Hadien ba la dep pynshisha da ki District Executive Officer / Executive Officer /Programme Manager ba ia ka 1st installment ba 50% (na ka subsidy) bala pyllait la dep pyntrei da ki beneficiaries, ki District Executive Officer /Superintendent of Fisheries kin sa pyllait pat sa ia ka 2nd Instalment ba 50% (na ka subsidy) jong ka jinglut.
12. Ka 3rd installment na ka bynta ki jingdonkam (inputs) yn sa pyllait hadien ba la dep shna ia ki pung kaban long ha ki ar bynta kumne, (a) ki symbai dohkha, jingbam dohkha, ki lad ai jingiada na ki jingpang yn sa pynbiang da ka department lyngba ki dealer, ki supplier bala ithuh bad kiwei kiwei. (b) ki jingdon kam (inputs) kum ka eit masi, shun, superphosphate, urea, bai trei bylla ha ka ban tan jar na ka por sha ka por yn siew beit sha ki kynhun / beneficiaries katkum ki bills, ki kot jingthoh, bad kiwei kiwei.
13. Shuwa ban pyllait ia ka subsidy, ki kynhun / beneficiaries bad kiwei kiwei kin hap ban iasoi ia ka kot jingiakut ka ban kdew ia u snem ha ka ban tong ia ki dohkha na ki pung jong ki bad ka jingai jingtip lypa sha ka ophis shuwa ka sngi ban tong.
14. Ki Superintendent of Fisheries /District Executive Officer ki dei ban phah ia ka report man la u bnai halor ka jingpyntrei ia ka kam naduh basdang haduh ban da dep sha u Chief Executive Officer, Fish Farmer Development Agency.
15. Ki Superintendent of Fisheries -cum- District Executive Officers ki dei ban lum jingtip bad buh jingthoh kiba tikna halor ki sngi ba tong dohkha, ka jingmih ka dohkha, ki jait dohkha ba la tong, ka jingheh, ka iew bala die ia ki dohkha na ka wei pa ka wei ka pung shnong ba la ai jngiarap ryngkat ki dur ki dar, ki phlim ba la ring lyngba ki video.

Director of Fisheries-cum-
Chief Executive Officer, FFDA
Meghalaya, Shillong

KA JINGBATAI DA KA DUR IA KA RUKOM TREI KAM HA KA BAN PYNHEH IA KI JAKA SHNONG/ KYNHUN BA LANG UM.



Director of Fisheries-cum-
Chief Executive Officer, FFDA
Meghalaya, Shillong